

BOLCO BASES

ALL PRICES SUBJECT TO CHANGE & AVAILABILITY PLUS SHIPPING

**PRO STYLE BASE WITH METAL PAN****6200-ML**

- Set of 3 regulation size 15" x 15" x 3" bases
- Rubber Cover
- Universal Stanchion
- Ground Anchor Included
- Shipping weight: 34 lbs.

**\$139.95****BOLCO PRO-STYLE BASES****175-MLB**

- Set of 3 regulation size 15" x 15" x 3" bases for all ages and skill levels
- Durable one piece all rubber construction
- Modular heavy gauge non-collapsible textured white rubber
- Universal aluminum stanchion fits both male and female ground anchor
- The 175-MLB is not an impact base
- Ground anchor not included (see page 7)
- Shipping weight: 42 lbs.

\$244.95**BOLCO PRO STYLE MODEL BASES****100-ML**

- Set of 3 regulation size 15" x 15" x 3" bases
- Vinyl Cover
- Bonded polyurethane padding
- Strapless bases easily bolted to anchor plate
- Shipping weight: 22 lbs.
- Anchor and anchor plate *NOT* included (see page 7)

\$124.95**PROFESSIONAL BASES WITH STRAPS****120-PRO**

- Set of 3 regulation size 15" x 15" x 3" bases
- Top quality—vinyl covered
- Bonded polyurethane padding
- Washable recessed nylon straps
- Shipping weight: 21 lbs.
- Use with ABS spikes or Anchor and anchor plates (not included) (see page 7)

\$124.95**SAFETY BASES****150-SB**

- Set of 3 regulation size 15" x 15" x 2-1/2" slide over safety bases for all skill levels
- Modular one piece all rubber construction
- Tapered sides
- Heavy gauge non-collapsible textured white rubber
- Universal aluminum stanchion bits both male and female ground anchor
- Ground anchor not included (see page ??)
- Shipping weight: 26 lbs. per set

\$215.95**ALL PRICES SUBJECT TO CHANGE & AVAILABILITY PLUS SHIPPING**

BOLCO PRO STYLE MAGNETIC BASES

MBASE

- Set of 3 regulation size 15" x 15" x 3" bases
- 3 Magnetic adjustable plates adjust hold for all ages and skill levels
- Durable one piece all rubber base cover
- Modular heavy gauge non-collapsible textured white rubber
- Universal steel stanchion part for excellent durability
- Shipping weight: 75 lbs., set of 3
- Ground anchor not included *(see page 7)*

\$595

MBASE-1 Major League Magnetic Single Base

- 1 Regulation size 15" x 15" x 3" base
- Shipping weight: 25 lbs., single.

\$199.95

BOLCO PRO STYLE MAGNETIC SINGLE FIRST BASE

MBASE-1-0

- 1 Regulation size 15" x 15" x 3" base
- 3 Magnetic adjustable plates adjust hold for all ages and skill levels
- Durable one piece all rubber base cover
- Modular heavy gauge non-collapsible textured orange rubber
- Universal steel stanchion fits male or female anchors
- Ground anchor not included *(see page 7)*
- Shipping weight: 25 lbs.

\$199.95

MAGNETIC PLATE ASSEMBLY

203-MBA

- Includes magnetic plate back and adjustable plates and stanchion

\$135.95



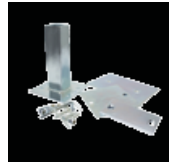
Back



Magnetic Plate



Back



Adjustable Plate and Stanchion



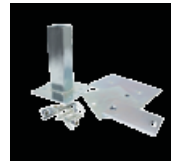
Back



Magnetic Plate



Back



Adjustable Plate and Stanchion



Magnetic Plate



Back



Adjustable Plate and Stanchion

ALL PRICES SUBJECT TO CHANGE & AVAILABILITY PLUS SHIPPING



MOLDED DOUBLE FIRST BASE

110-DBL

- 1 Regulation size 15" x 30" x 3" base
- One piece all rubber construction
- Modular heavy gauge non-collapsible textured rubber
- Universal aluminum stanchion fits a male or female ground anchor
- Ground anchor not included *(see page 7)*
- Shipping weight: 26 lbs.



\$174.95

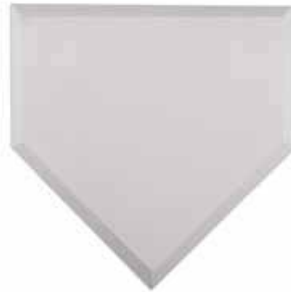


WAFFLE THROW DOWN BASES

170R-WTD

- Set of 3 bases
- Retail packaged
- Shipping weight: 17 lbs.

\$27.95



WAFFLE THROW DOWN HOME PLATE

370R-WHP

- Individually sold
- Retail packaged
- Shipping weight: 7 lbs.

\$11.95

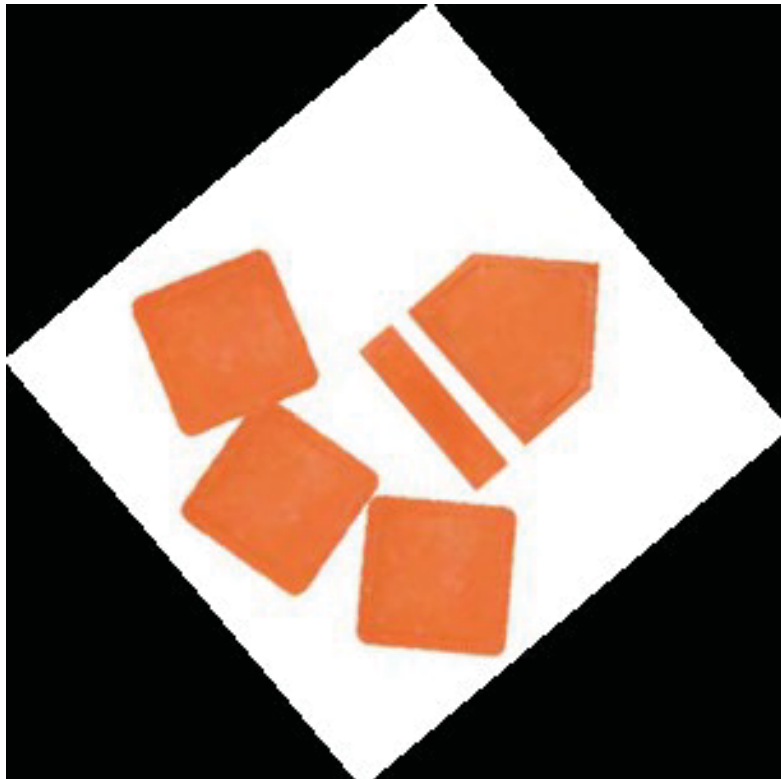


HOME PLATE EXTENSION

390-EX

- Individually sold
- White throw down
- 17" wide x 25-1/4" long
- Shipping weight: 4 lbs.

\$8.95



RUBBER THROW DOWN BASE SET

190R-RTD

- Set of 5 bases includes:
 - 3 Bases
 - 1 Home plate
 - 1 Pitcher's rubber
- Retail packaged
- Shipping weight: 6 lbs.

\$11.95

ALL PRICES SUBJECT TO CHANGE & AVAILABILITY PLUS SHIPPING

STAKE DOWN HOME PLATE

310-SHP

- Ground anchor included #227-FAS
- White top, black beveled edges
- Stanchion and mounting plate included
- Powder coated for better rust and corrosion protection
- Regulation size
- Shipping weight: 17 lbs.



\$68.95

ALL PLAY HOME PLATE

300-AS

- Regulation size: 3" thick home plate
- No Corners or edges to catch spikes
- Beveled edges extend down into deep black apron
- Entire exterior molded heavy duty rubber
- Wood filled
- Ready to install
- Shipping weight: 25 lbs.



Back

\$68.95

MAX ALL PLAY HOME PLATE

300-WAS

- Regulation size: 3" thick home plate
- No Corners or edges to catch spikes
- Beveled edges extend down into deep black apron
- Molded heavy duty rubber
- Wood filled
- Ready to install
- Shipping weight: 25 lbs.



Back

\$63.95

HOME PLATE

380R-HP

- Regulation size home plate
- Five 4" zinc plated metal spikes included
- Retail packaged
- Shipping weight: 12 lbs.



Back



\$25.95

ALL PRICES SUBJECT TO CHANGE & AVAILABILITY PLUS SHIPPING



END SPIKED PITCHING RUBBER

- Easy to install
- Metal plates at each end for spikes
- Spikes hold plate in position during play
- Includes 2 spikes

480-ESP: adult

- Size: 6" x 27"
- Shipping weight: 9 lbs.

\$18.95

485-YESP: youth

- Size: 5" x 21"
- Shipping weight: 5 lbs.

\$15.95



FIRM GRIP STEP DOWN PITCHING RUBBER

- Limits depth of holes in front of pitcher's rubber giving pitcher firm footing
- Easy maintenance / easy installation
- Wood block filled core

410-FG: adult

- Size: 6" x 24"
- Shipping weight: 18 lbs.

\$50.95

430-FGY: youth

- Size: 4" x 18"
- Shipping weight: 18 lbs.

\$38.95

FOUR WAY PITCHING RUBBER

- Easy to install
- Rotates Sides for Extended Life
- Shipping weight: 18 lbs.

450-C1: adult

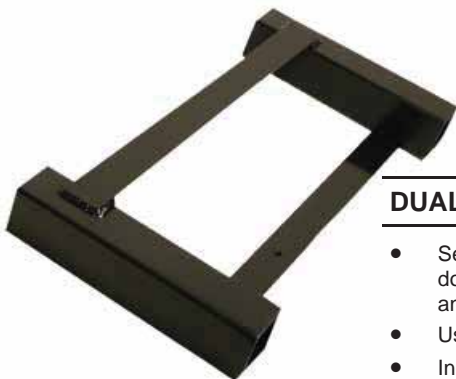
- Size: 6" x 24"

\$70.95

450-C2: youth

- Size: 4" x 18"

\$42.95



DUAL GROUND ANCHOR

- Secure removable pitcher's rubber or double first base with double ground anchor system
- Use with 110-DBL, 490-PAT, 495-PAT
- Individually sold

490-GAS: adult **\$44.95**

495-GAS: youth **\$43.95**

REGULATION PITCHING RUBBERS

- Attaches to 490-PAT Anchor Top Plate
- Perfect for Multi-Purposes Fields
- 1/2" Tough White Rubber with 3 Metal Spikes
- Easy installation
- Shipping weight: 18 lbs.

490R-CC: adult

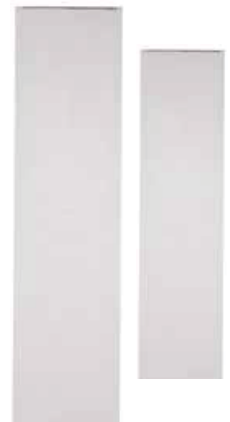
- Size: 6" x 24"

\$18.95

495R-LCC: youth

- Size: 4" x 18"

\$15.95



PITCHING RUBBER TOP PLATE

- Bolts on to Bolco 490R-CC and 495R-LCC
- Fits into 490-GAS or 495-GAS
- Simply remove pitcher's rubber after game or practice
- Perfect for multi-purpose fields
- Hardware included
- Individually sold

490-PAT: adult **\$28.95**

495-PAT: youth **\$25.95**

ALL PRICES SUBJECT TO CHANGE & AVAILABILITY PLUS SHIPPING

**GROUND ANCHOR****225-BAS: male adapter**

- For Bolco bases
- Top quality steel
- 9" long & 1" square
- Zinc plated plus special rust inhibitors
- Individually sold
- Shipping weight: 1 lb. ea.

\$3.25**GROUND ANCHOR****227-FAS: female adapter**

- 1-1/2" x 1-1/2" female receptacle
- Top quality steel
- Zinc plated plus special rust inhibitors
- Individually sold
- Shipping weight: 1 lb. ea.

\$8.95**ANCHOR TOP PLATE****255-BATM**

- Universal steel
- Fits male or female anchor stakes
- For 100-ML (page 2) and 120-PRO (page 2)
- Individually sold
- Shipping weight: 3 lbs. ea.

\$14.95**ANCHOR TOP PLATE****6245-BAT**

- Fits male anchor stakes
- For 100-ML (page 2) and 120-PRO (page 2)
- 1 Top plate only
- Made of ABS
- Individually sold
- Shipping weight: 2 lbs. ea.

\$8.95**ABS - BASE SPIKE****ABS**

- 12" Regulation size
- Individually sold

\$2**DIGOUT TOOL****12916610**

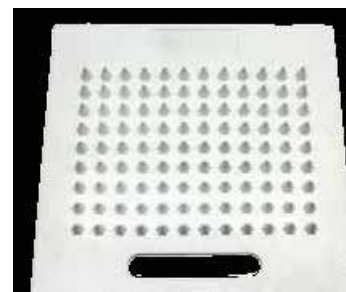
- Remove excess dirt in and around ground anchor
- Individually sold

\$7.95**BASE / ANCHOR PLUG****230-SP**

- 1' X 1' Orange plug
- Fits over 1" stake and into 1-1/2" ground stake
- Individually sold

**\$6****CLEAT CLEANER MAT****FCC-MAT**

- Durable synthetic material
- Built-in handle for easy transport
- Stakes included for stationary use
- 14" H x 19-1/2" W

\$23.95

ALL PRICES SUBJECT TO CHANGE & AVAILABILITY PLUS SHIPPING