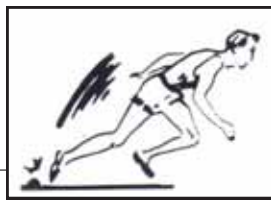


TRACK CATALOG

	PAGE(S)
Running Track Surfaces.....	2-11
Long Jump Pit Surfaces	12-16
Shot Put Throwing Sector Surfaces.....	17



ALL PRICES SUBJECT TO CHANGE & AVAILABILITY PLUS SHIPPING



JET TRACK™ RUNNING TRACKS

Economical Alternatives to Synthetic, All-Weather Tracks for New Warning Tracks or for Many Years Of Higher Performance from Your Existing Cinder Track!

Jet Track Mixes, which can be applied over your present cinder track, are quality controlled mixes, with natural clay or Stabilizer® Binder blended with 3/16" crushed aggregate, superior to coal cinders as they will not break down and become powdery.

Jet Track Mix makes a firm, smooth surface with great drainage. Available in burgundy red, grey, or tan, with either 20% red, grey, or tan **Beam Clay® Binder** for a smoother surface, or 5% red, grey, or tan **Beam Clay® Binder** for a somewhat "crunchier" surface, or "**STABILIZED**" in red, grey, tan or white for a firmer, yet more resilient, surface – each with excellent drainage and resistance to erosion. Excellent natural surfaces for walking paths & jogging trails. Easy to maintain: Recommended maintenance is to scarify and roll each spring. Otherwise, drag mat as needed to maintain smooth surface. Recommended depth for a new track is 3"; for resurfacing a cinder track 1-3". Resurfacing a cinder track can be tapered with 3" on inside lanes out to 1" in outer lanes.

Stabilizer® binds the aggregate together for a firmer, yet more resilient, natural running track surface requiring minimal maintenance.

3/16" Red, Grey or Tan Jet Track™ with Natural Beam Clay® Binder

One cubic yard weighs approximately 2,700 lbs. in red, approximately 3,240 lbs. in grey, tan or white, plus add 20% for compaction. Each 1" compacted requires approximately 5 tons per 1,000 square feet for red, 6 tons for grey, tan or white. Each 1" compacted over a 400 meter x 32' wide running track with starting area will require approximately 222 tons for red, 265 tons for grey, tan or white.

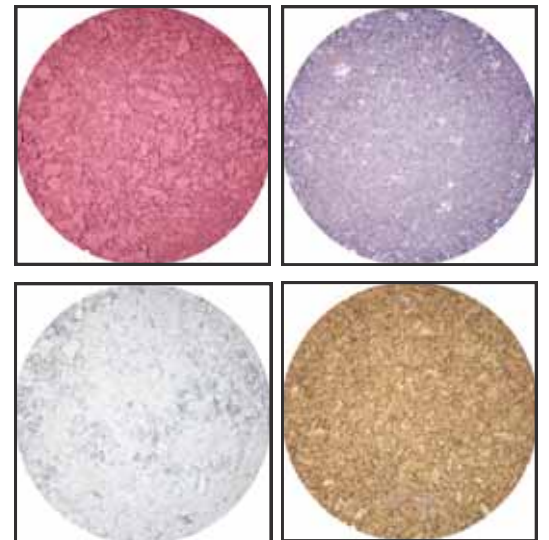
	BULK/TON	50 LB. BAG Up to 50/pallet
Burgundy Red with 5% Beam Clay® Red Binder	\$55	\$5.95
Burgundy Red with 20% Beam Clay® Red Binder	\$80	\$6.50
Grey with 5% Beam Clay® Grey Binder	\$55	\$5.95
Grey with 20% Beam Clay® Grey Binder	\$80	\$6.50
Tan with 5% Beam Clay® Tan Binder	\$70	\$6.95
Tan with 20% Beam Clay® Tan Binder	\$95	\$7.50
White with 5% Beam Clay® White Binder	\$55	\$5.95
White with 20% Beam Clay® White Binder	\$80	\$6.50



3/16" Red, Grey or Tan Stabilized Jet Track™ with Stabilizer® Binder

For an even firmer yet more resilient surface with even less maintenance: 3/16" crushed aggregate blended with Stabilizer® At the rate of 15 lbs. per ton of aggregate. One cubic yard weighs approximately 2,700 lbs. in red, approximately 3,240 lbs. in grey, tan or white plus add 20% for compaction. Each 1" compacted requires approximately 5 tons per 1,000 square feet for red, 6 tons for grey or tan. Each 1" compacted over a 400 meter x 32' wide running track with starting area will require approximately 222 tons for red, 265 tons for grey, tan or white.

	BULK/TON	50 LB. BAG Up to 50/pallet
Burgundy Red with Stabilizer® Binder	\$110	\$7.50
Grey with Stabilizer® Binder	\$110	\$7.50
Tan with Stabilizer® Binder	\$125	\$7.95
White with Stabilizer® Binder	\$110	\$7.50



We have other track surfaces without **BEAM CLAY®** binder or **STABILIZER®** binder. While these will not give the level of performance as the above for running tracks, they do provide excellent surfaces for walking or jogging tracks:

Regional CRUSHED RED STONE TRACK MIXES from plants in the East, South, Mid-West, and West Coast.

RED BRICK TRACK

RED LAVA TRACK

PALLET & COVER CHARGES: \$6.50/PALLET.

ALL PRICES SUBJECT TO CHANGE & AVAILABILITY PLUS SHIPPING

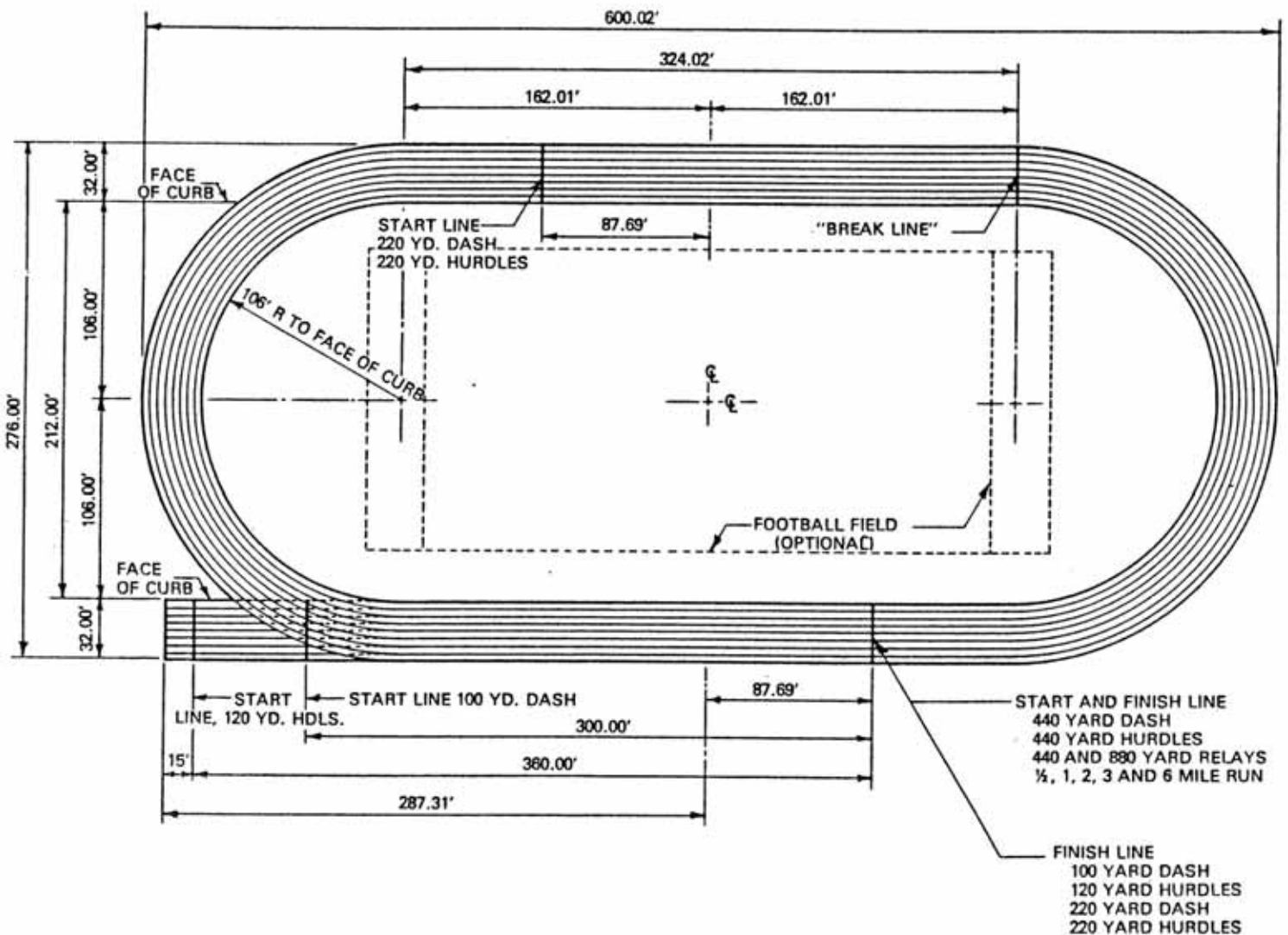
BEAM CLAY®

Running Tracks

JET TRACK MIX makes a firm, smooth, surface with great drainage. An economical alternative to synthetic. All-weather tracks. **JET TRACK MIX** is a quality controlled mix, utilizing natural clay, granulated vesicular aggregate and diabase component, superior to coal cinder as it will not break down and become powdery. Easy to maintain: recommended maintenance is to scarify and roll each Spring; otherwise, drag mat as needed to maintain a smooth surface. Recommended depth for a new track is 3". For resurfacing a cinder track 1-3", with 3" on inside lane.

Adding Stabilizer® binds the particles together to make a more resilient surface with excellent drainage.

Hilltopper™ Track Mix is polymerized to create a resilient surface that repels water, making it as close as it gets to being a natural "synthetic" running track surface.



ALL PRICES SUBJECT TO CHANGE & AVAILABILITY PLUS SHIPPING

RUNNING TRACK RUBBER CURBING

PER PIECE

4" High x 4" Wide x 6' Long (30 lbs./piece, up to 99 pieces/pallet)

\$33

6" High x 4" Wide x 6' Long (45 lbs./piece, up to 63 pieces/pallet)

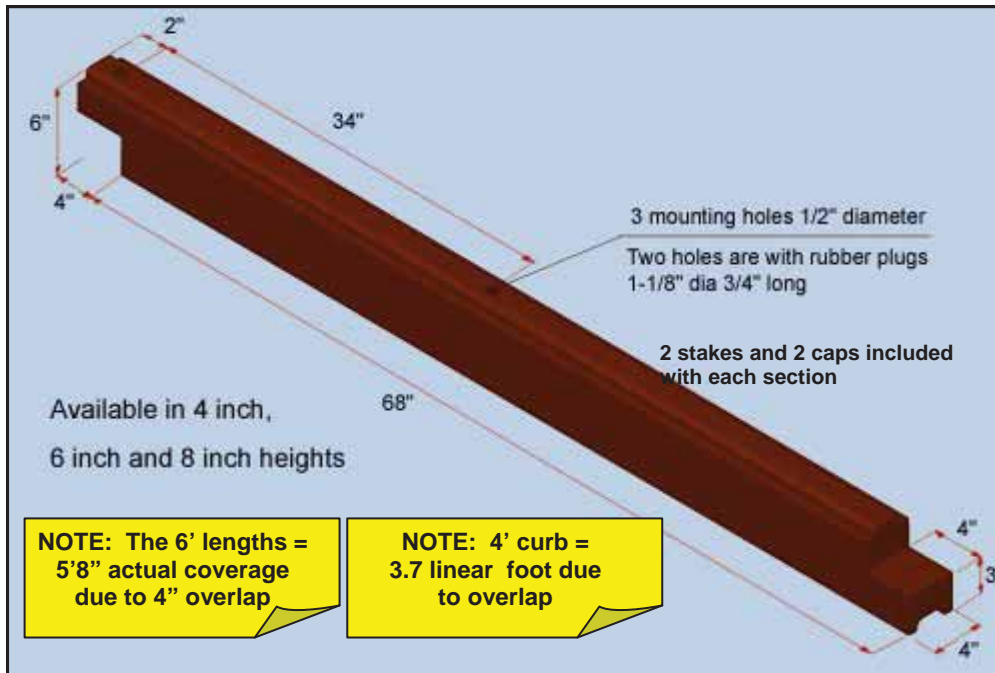
\$50

8" High x 4" Wide x 6' Long (70 lbs./piece, up to 45 pieces/pallet)

\$68

4" High x 3" Wide x 4' Long (14 lbs./piece, up to 140 pieces/pallet)

\$20



- More resilient than wood
- No warping or discoloring
- No splinters
- Non toxic
- Will not rot
- Stackable
- Interlocking
- Available in 4 ft lengths and 4" or 6 ft lengths and 4", 6" and 8" heights
- No CCA or other harmful chemicals
- Easy to install with pre drilled holes
- Made from 100% recycled tires
- Flexible with rounded edges
- Will not breed ticks, termites or other insects
- Maintenance free
- Hardware & Caps included
- Neutral brown tone-compatible with any surface color

2 stakes and 2 caps are included with each curb

natural brown bendable stackable interlocking hardware included

ALL PRICES SUBJECT TO CHANGE & AVAILABILITY PLUS SHIPPING

RUNNING TRACKS - INSTALLING RUBBER CURBING



ALL PRICES SUBJECT TO CHANGE & AVAILABILITY PLUS SHIPPING

Rubber Curbing For Running Tracks

Product Specifications

Product Description:

1. Material: compression molded composite of the 100% recycled rubber and polyurethane Prepolymer
2. Physical properties of the rubber composite:
 - a) Density 0.6 oz/cu in (ASTM C642)
 - b) Durometer Hardness 65A \pm 7 (ASTM D2240)
 - c) Tensile Strength* minimum 125 psi (ASTM D412)
(* main structural areas)
 - d) Compression deformation 10% at 70psi, 68°F (ASTM D575)
 - e) Brittleness at Low temperature: -40°F (ASTM D746)
 - f) Freeze and thaw when exposed (ASTM C672)
to deicing chemicals no loss after 50 cycles
 - g) Coefficient of thermal expansion: 8 x10-s in/in/°F (ASTM C531)
 - h) Weathering 70 hours at 158°F (ASTM D573)
 - hardness retained 100% (\pm 5%)
 - compressive strength 100% (\pm 5%)
 - tensile strength 100% (\pm 5%)
 - elongation retained 100% (\pm 5%)
3. Available models:
 - a) 4"W x 4"H x72"L with weight of 28 lbs
 - b) 4"W x 6"H x72"L with weight of 45 lbs
 - c) 4"W x 8"H x72"L with weight of 65 lbs
4. Finishing color: dark brown

Installation methods:

- a) with 2 spikes 18" long x 3/8" diameter provided for each 4" high piece
- b) with 2 spikes 24" long x 3/8" diameter provided for each 6" high or 8" high piece

Note: The mounting holes can be closed after installation with the rubber plugs 1-1/8 diameter and 3/4" long, supplied with the product.

Components:

- a) 100% recycled rubber from car and truck tires (NR, SBR)
- b) polyurethane prepolymer for rubber granules
- c) brown pigment

ALL PRICES SUBJECT TO CHANGE & AVAILABILITY PLUS SHIPPING



Multiple Lane Dry Chalk Track Marker

Makes preparation for a meet a quick job! Two people can lay out a track in 30 minutes. Works on any track. When a curb is present every line will be uniformly accurate to the fraction of an inch. Set-up time for use or storage is five minutes. Each hopper can hold up to 25 lbs. and go 440 yards. Hoppers do not have a shut off, it's free flowing once it starts moving, just adjust speed to obtain desired thickness.

LMLD-440-8	7 hopper 8 lane; '440 yd. capacity; class 65; 192 lbs.	\$2,725
LMLD-440-7	6 hopper 7 lane; '440 yd. capacity; class 65; 177 lbs.	\$2,450
LMLD-440-6	5 hopper 6 lane; '440 yd. capacity; class 65; 162 lbs.	\$2,175
LMLD-440-5	4 hopper 5 lane; '440 yd. capacity; class 65; 147 lbs.	\$1,900
LMLD-440-4	3 hopper 4 lane; '440 yd. capacity; class 65; 132 lbs.	\$1,625
LMLD-440-EXT	replacement hopper; '440 yd. capacity; UPS 15 lbs.	\$275
LMLD-MAIN	replacement main assembly, 87 lbs.	\$800

ALL PRICES SUBJECT TO CHANGE & AVAILABILITY PLUS SHIPPING

BLANKET STYLE WEIGHTED TRACK PROTECTORS

TAKES THE BEATING IN HIGH-TRAFFIC AREAS! Let Track Protectors take the beating in high-traffic areas, so your track can stay smooth. Standard or Crossover sizing.



Blanket Style Track Protector Specifications

Fabric	Non-woven polypropylene
Top Surface	Heat tempered, retains durability, even from cleats
Bottom Surface	Heat tempered - loose fibers won't cling to track
Blanket Color	Heather gray to reflect heat
Binding Color	18 oz. Solid Vinyl available in 14 colors, see chart
Binding	Hemmed, weighted vinyl lies flat and stays in place

15 OZ. SIZE

7' x 30'	\$435
7' x 40'	\$515
7' x 50'	\$615
14' x 30'	\$590
14' x 40'	\$700
14' x 50'	\$875
14' x 75'	\$1,185
14' x 100'*	\$1,500
14' x 125'*	\$1,850
14' x 150'*	\$2,100

CUSTOM SIZE Call for quote.

*Easier handling if made in two sections with Velcro attachment.

Printing not available on blanket-style protectors.



18 oz. Solid Vinyl Hem Colors (actual colors may vary)



ALL PRICES SUBJECT TO CHANGE & AVAILABILITY PLUS SHIPPING

ARMOR MESH WEIGHTED TRACK PROTECTORS

TAKES THE BEATING IN HIGH-TRAFFIC AREAS! Let Track Protectors take the beating in high-traffic areas, so your track can stay smooth. Standard or Crossover sizing.

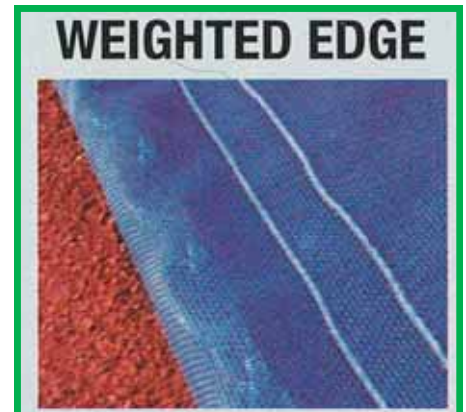
ARMOR MESH TRACK PROTECTORS SPECIFICATIONS

- Heavy-duty 14 OZ. vinyl coated woven polyester
- Retains durability even from cleats, and allows water to drain
- Available in 13 colors

14 OZ. SIZE

6' x 30'	\$360
6' x 40'	\$435
6' x 50'	\$495
12' x 30'	\$475
12' x 40'	\$630
12' x 50'	\$775
15' x 30'	\$595
15' x 40'	\$780
15' x 50'	\$975
15' x 75'	\$1,390
15' x 100'	\$1,790

Please note: Armor Mesh Weighted Track Protectors are manufactured without solid vinyl edging. If solid vinyl edging is required add 10%.

**LETTERING & NUMBERS**

	<u>WHITE LETTER</u>	<u>COLOR LETTER</u>
42" H	\$56	\$65
48" H	\$66	\$75
54" H	\$77	\$88
60" H	\$89	\$100
Minimum	\$300	\$495

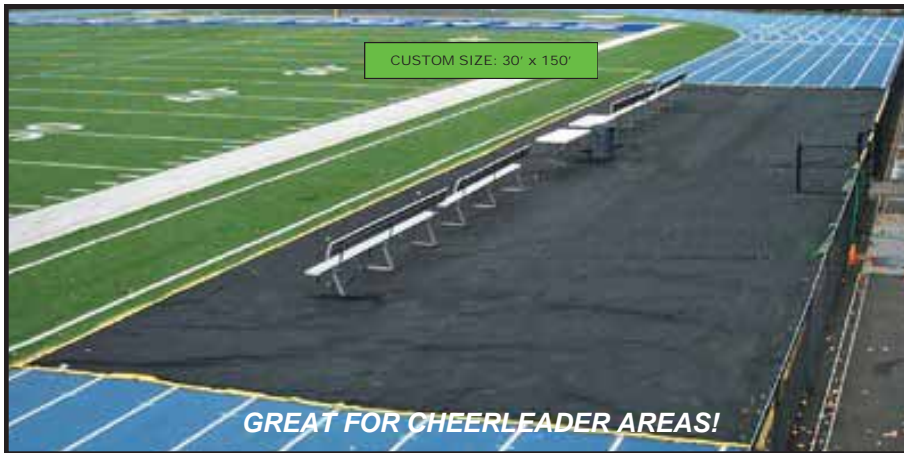
**CUSTOM LOGOS/MULTI-COLORED IMAGES**

	<u>WHITE IMAGE</u>	<u>COLOR IMAGE</u>
Up to 15 SF (ex. 3' x 5')	\$260	\$360
Up to 30 SF (ex. 5' x 6')	\$400	\$495
Up to 50 SF (ex. 5' x 10')	\$535	\$650

ALL PRICES SUBJECT TO CHANGE & AVAILABILITY PLUS SHIPPING

AER-FLO BENCH ZONE® SIDELINE TRACK PROTECTOR

DESIGNED FOR TRACKS THAT FIT TIGHTLY AROUND FOOTBALL FIELDS
WIND WEIGHTED TRACK PROTECTOR
Protects Track Surface in Bench Area.
RESISTS & CUSHIONS AGAINST CLEATS, BUT RAIN DRAINS THROUGH.



Finally, there's a way to easily and smartly cover sideline bench areas that include both turf AND a costly track surface. We take the toughest polypropylene geotextile fabric and add a double-stitched vinyl edging with steel chain inserted all around. This ballasting keeps the cover down in high winds without using stakes or staples.

To reduce handling weight and make them easier to install, the longer Protectors come in two sections that can easily be joined with Velcro® hook & loop strips that are double-stitched along the entire length of each section's overlapping chain-free center edges.

Edging is brightly colored to maximize visibility for those crossing it.

SPECS: Fabric: Standard Black geotextile with standard white or gold edging for safety and durability. PERIMETER EDGING available in 15 additional colors of 18 OZ. SOLID VINYL.

- #3651 15' x 75' 284 lbs. **\$785**
- #3652 15' x 100*** 352 lbs. **\$975**
- #3653 15' x 125*** 420 lbs. **\$1,195**
- #3654 15' x 150*** 488 lbs. **\$1,395**
- #3658 CUSTOM SIZES, OVER 801 SF **79¢/SF**

18 oz. Vinyl border, colors other than White or Gold **\$45**

** UNITS ARE IN TWO PIECES THAT JOIN AT CENTERLINE WITH VELCRO® FASTENING

18 OZ. VINYL COLOR CHART

White	Grey	Beige/Tan	Black	Maroon	Red	Orange	Yellow/Gold	
Kelly Green	Midnight Green	Medium Green	Navy	Royal Blue	CC Sky Blue	Purple	Vegas Gold	Sport Grey/Charcoal

ACTUAL COLOR OF MATERIALS MAY VARY FROM EACH "LOT" / "RUN". IF YOU ARE TRYING TO MATCH A SPECIFIC COLOR, PLEASE REQUEST A SAMPLE FROM THE CURRENT STOCK AVAILABLE FOR PRODUCTION.

BENCH ZONE 2G TRACK PROTECTORS

Second Generation (2G) for Unmatched Durability, Color Choice and Imprinting

2G combines the above track protectors with vinyl surface protection (Adds VIPOL® Matrix as the top layer) which allows for imprinting. VIPOL® Matrix offers 23 cover colors and the 18 oz. vinyl edging offers 17 colors. Add Chroma-Bond multi-color imprinting to display school colors, ID and LOGO. Custom sizes available.

- #3651-2G 15' x 75' 2nd Gen. Track Protector, Geo. & VIPOL® Matrix Mesh Overlay **\$1,685**
- #3652-2G 15' x 100*** 2nd Gen. Track Protector, Geo. & VIPOL® Matrix Mesh Overlay **\$2,095**
- #3653-2G 15' x 125*** 2nd Gen. Track Protector, Geo. & VIPOL® Matrix Mesh Overlay **\$2,550**
- #3654-2G 15' x 150*** 2nd Gen. Track Protector, Geo. & VIPOL® Matrix Mesh Overlay **\$2,985**
- #3658-2G CUSTOM SIZES, OVER 800 SF **\$2.50/SF**

18 oz. Vinyl border, colors other than White or Gold

CHROMA-BOND imprinting available, see page 15



VIPOL® MATRIX COLOR CHART

White	Grey	Beige/Tan	Brown	Black	Maroon	Scarlet	Red	Burnt Orange	Orange	Vegas Gold	
Gold	Yellow	Aqua	Kelly Green	Forest Green	Midnight Green	Navy	ProBlue	Royal Blue	CC Sky Blue	Purple	Sport Grey/Charcoal

ACTUAL COLOR OF MATERIALS MAY VARY FROM EACH "LOT" / "RUN". IF YOU ARE TRYING TO MATCH A SPECIFIC COLOR, PLEASE REQUEST A SAMPLE FROM THE CURRENT STOCK AVAILABLE FOR PRODUCTION.

ALL PRICES SUBJECT TO CHANGE & AVAILABILITY PLUS SHIPPING

CROSS-OVER ZONE® TRACK PROTECTORS

PROTECTS COSTLY TRACK SURFACE

Resists and cushions against cleats, shoes, and wheeled equipment. Fabric is super durable and water permeable with chain-in-vinyl edging construction that keeps is down in high wind without stakes. Standard sizes: widths: 7.5' or 15' x lengths: 30', 40', or 50'. Standard color is black with standard gold or white edging. Custom edging available in 15 additional 18 oz. vinyl colors. Custom sizes are available.



#3663	15' x 30'	90 lbs.	\$435
#3664	15' x 40'	113 lbs.	\$525
#3665	15' x 50'	136 lbs.	\$640
#3667	7.5' x 30'	66 lbs.	\$315
#3668	7.5' x 40'	84 lbs.	\$375
#3669	7.5' x 50'	104 lbs.	\$455
#3698	CUSTOM SIZES, OVER 800 SF		\$1.45/SF
18 oz. Vinyl border, colors other than White or Gold			\$25

18 OZ. VINYL COLOR CHART

White	Grey	Beige/Tan	Black	Maroon	Red	Orange	Yellow/Gold	
Kelly Green	Midnight Green	Medium Green	Navy	Royal Blue	CC Sky Blue	Purple	Vegas Gold	Sport Grey/Charcoal

ACTUAL COLOR OF MATERIALS MAY VARY FROM EACH "LOT" / "RUN".
IF YOU ARE TRYING TO MATCH A SPECIFIC COLOR, PLEASE REQUEST A SAMPLE FROM THE CURRENT STOCK AVAILABLE FOR PRODUCTION.

CROSS-OVER ZONE 2G TRACK PROTECTORS

Second Generation (2G) for Unmatched Durability, Color Choice and Imprinting

2G combines the above protector with the vinyl surface protection (Adds VIPOL® Matrix as the top layer) which allows for imprinting. VIPOL® Matrix offers 23 cover colors and the 18 oz. vinyl edging offers 17 colors. Add Chroma-Bond multi-color imprinting to display school colors, ID and LOGO. Custom sizes available.

#3663-2G	15' x 30'	2nd Gen. Track Protector, Geo. & VIPOL® Matrix Mesh Overlay	\$895
#3664-2G	15' x 40'	2nd Gen. Track Protector, Geo. & VIPOL® Matrix Mesh Overlay	\$1,075
#3665-2G	15' x 50'	2nd Gen. Track Protector, Geo. & VIPOL® Matrix Mesh Overlay	\$1,355
#3667-2G	7.5' x 30'	2nd Gen. Track Protector, Geo. & VIPOL® Matrix Mesh Overlay	\$645
#3668-2G	7.5' x 40'	2nd Gen. Track Protector, Geo. & VIPOL® Matrix Mesh Overlay	\$775
#3669-2G	7.5' x 50'	2nd Gen. Track Protector, Geo. & VIPOL® Matrix Mesh Overlay	\$925
#3698-2G	CUSTOM SIZES, OVER 800 SF		\$2.50/SF
18 oz. Vinyl border, colors other than White or Gold			\$25

CHROMA-BOND multi-color imprinting available, see page 15



VIPOL® MATRIX COLOR CHART

White	Grey	Beige/Tan	Brown	Black	Maroon	Scarlet	Red	Burnt Orange	Orange	Vegas Gold	
Gold	Yellow	Aqua	Kelly Green	Forest Green	Midnight Green	Navy	ProBlue	Royal Blue	CC Sky Blue	Purple	Sport Grey/Charcoal

ACTUAL COLOR OF MATERIALS MAY VARY FROM EACH "LOT" / "RUN".
IF YOU ARE TRYING TO MATCH A SPECIFIC COLOR, PLEASE REQUEST A SAMPLE FROM THE CURRENT STOCK AVAILABLE FOR PRODUCTION.

ALL PRICES SUBJECT TO CHANGE & AVAILABILITY PLUS SHIPPING

LONG JUMP PIT SURFACES

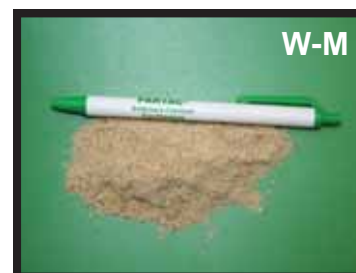
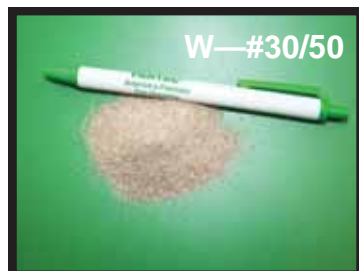
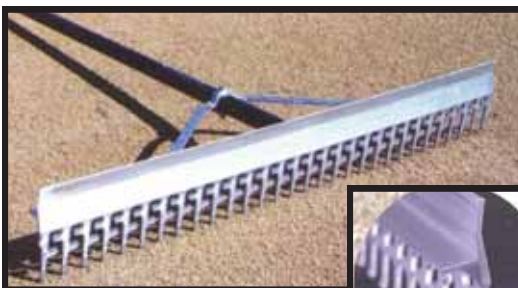


ALL PRICES SUBJECT TO CHANGE & AVAILABILITY PLUS SHIPPING

LONG JUMP PIT SANDS

Washed, Screened Silica Sands.

	BULK PER TON	TO GET APPROX PRICE/CU. YD. MULTIPLY BY	PER 50 LB. BAG
Partac® White Sand - Extra Fine Approximately 90% between .15mm - .4mm South Jersey Plant	\$30	1.2	—
Partac® Extra White Sand - Fine Approximately 75% between .25mm - 1.0mm South Jersey Plant	\$30	1.2	—
North Jersey Plant	\$47	1.2	\$4.75
Partac® White Sand - Medium Approximately 85% between .25mm - 1.0mm South Jersey Plant	\$29	1.2	—
North Jersey Plant—Double Screened	\$45	1.2	\$4.95
North Jersey Plant—Double Screened & Heat-Treated	\$58	1.2	\$5.25
Partac® White Double Screened #30/50 Heat-Treated .3mm - .6mm South Jersey Plant	\$90	1.2	—
Partac® White #20/40 Heat-Treated .4mm - .8mm South Jersey Plant	\$95	1.2	—

**XW-F****W-M****W-#30/50****W-#20/40****SAND / SCREENING RAKE**

Sifting Teeth with Rounded Ends Excellent for Sifting Sand.
With Extended Straight Edge Specifically Designed for
Grading and Leveling.

11024	24" Blade, 5 lbs.	\$62.95
11030	30" Blade, 5 lbs.	\$67.95
11036	36" Blade, 6 lbs.	\$72.95
11042	42" Blade, 6 lbs.	\$75.95
11048	48" Blade, 6 lbs.	\$83.95

ALL PRICES SUBJECT TO CHANGE & AVAILABILITY PLUS SHIPPING

LANDING ZONE™ BALLASTED PIT COVERS

KEEPS SAND IN and KIDS AND ANIMALS OUT!

Made with our exclusive Vipol® Matrix Mesh Material, the Landing Zone™ Ballasted Pit Covers are tough beyond belief. Your sand stays where it belongs, in the pit, protected from wind, animals, and children. But rain, sun, and air penetrate the material, eliminating water pooling and mold. Also available in reinforced solid vinyl.



Galvanized steel chain is installed in the edge hem all around, providing enough ballast to keep wind from getting under. These covers **STAY PUT IN HIGH WINDS** without stakes or sandbags.

3680 LZ Ballasted Pit Cover made with 10 oz. Vipol™ Matrix Mesh—Available in 23 colors!

\$2.35/sq.ft.

3682 LZ Ballasted Pit Cover made with 18 oz. Solid Vinyl—Available in 17 colors!

\$2.10/sq.ft.

CHROMA-BOND imprinting available see page 15

Sizes: All Landing Zone™ Ballasted Pit Covers are CUSTOM sized.

VIPOL® MATRIX COLOR CHART

White	Grey	Beige/Tan	Brown	Black	Maroon	Scarlet	Red	Burnt Orange	Orange	Vegas Gold	
Gold	Yellow	Aqua	Kelly Green	Forest Green	Midnight Green	Navy	ProBlue	Royal Blue	CC Sky Blue	Purple	Sport Grey/Charcoal

18 OZ. VINYL COLOR CHART

White	Grey	Beige/Tan	Black	Maroon	Red	Orange	Yellow/Gold		
Kelly Green	Midnight Green	Medium Green	Navy	Royal Blue	CC Sky Blue	Purple	Vegas Gold	Sport Grey/Charcoal	

ACTUAL COLOR OF MATERIALS MAY VARY FROM EACH "LOT" / "RUN".
IF YOU ARE TRYING TO MATCH A SPECIFIC COLOR, PLEASE REQUEST A SAMPLE FROM THE CURRENT STOCK AVAILABLE FOR PRODUCTION.

ALL PRICES SUBJECT TO CHANGE & AVAILABILITY PLUS SHIPPING

CHROMA-BOND IMPRINTINGChroma-Bond Imprinting, 2 Color Logo &
Lettering on 3rd Color Background

Up to 3' x 30'L	\$1,175/EA.
Up to 4' x 50'L	\$1,375/EA.

Chroma-Bond Imprinting, 1 Color Logo Only

Up to 25SF	\$435/EA.
26SF—50SF	\$565/EA.
51SF-100SF	\$795/EA.

Chroma-Bond Imprinting, 2 Color Logo Only

Up to 25SF	\$535/EA.
26SF—50SF	\$665/EA.
51SF-100SF	\$895/EA.

Chroma-Bond Imprinting, 3 Color Logo Only

Up to 25SF	\$595/EA.
26SF—50SF	\$725/EA.
51SF-100SF	\$955/EA.

Chroma-Bond Imprinting, 1 or 2 Color Letters
or Numbers

Up to 24" Tall	\$45/EA.
36" Tall	\$52/EA.
48" Tall	\$65/EA.
60" Tall	\$75/EA.
72" Tall	\$95/EA.
84" Tall	\$105/EA.
96" Tall	\$125/EA.
108" Tall	\$145/EA.
120" Tall	\$165/EA.



Our sharp multi-color images will outlast other processes. Eliminates the historic problems of digital printing, like weathering, premature fading, scuffing, and unsightly white mesh backside color. Images will last outdoors as long as the fabric, something rarely true with digital imprinting. Also highly spike, cleat, and racquet resistant. Our thick, individually-applied, double coating process literally bonds the image into the vinyl and completely masks the underlying fabric color, so image colors are vivid and true.

Chroma-Bond imprinting is available on our vinyl-surfaced windscreen, cover, padding & sign products.



ALL PRICES SUBJECT TO CHANGE & AVAILABILITY PLUS SHIPPING

WEIGHTED LONG JUMP PIT COVERS

SAVE THE COST OF MAINTAINING JUMP PITS!

Features

- Weighted around perimeter – requires no sandbags or stakes
- Available with either steel ball bearings or steel chain in heat-sealed hem all around perimeter.
- Available in standard sizes or custom.
- Printable 18 oz. or 14 oz.



18 oz. Solid

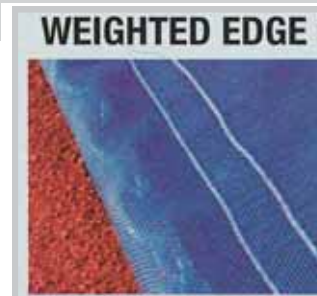
14 oz. ArmorMesh

Stock colors		Maple Green, Royal Blue, Red, Navy Blue, Gray, Maroon, Sky Blue, Purple, Yellow, White, Tan, Black, Kelly Green, Orange
		Dark Green, Royal Blue, Red, Light Gray, Kelly Green, Maroon, Navy Blue, Black, Purple, Orange, Carolina Blue, Yellow, White

Fabrics	18 oz. Solid Vinyl	14 oz. ArmorMesh	6 oz. Polyethylene
Properties	Waterproof 14 colors	Heavy-duty allows for water penetration and keeps out debris. 13 colors	Waterproof Light weight Silver/White



Weighted Long Jump Pit Covers:
Solid Vinyl & Armor Mesh—
3 year warranty.
Polyethylene—2 year warranty



STANDARD FEATURE



Weighted edge on ArmorMesh

18 oz. Solid Vinyl With Heat-Sealed Hem

Standard Sizes

12' x 28'	\$450
12' x 30'	\$485
12' x 32'	\$515
12' x 34'	\$535
Custom Size	\$1.60/SF

LETTERING & NUMBERS

	WHITE LETTER	COLOR LETTER
42" H	\$56	\$65
48" H	\$66	\$75
54" H	\$77	\$88
60" H	\$89	\$100
Minimum	\$250	\$350

OPTIONAL FEATURE



14 oz. Premium ArmorMesh With Heat-Sealed Hem

Standard Sizes

12' x 28'	\$440
12' x 30'	\$475
12' x 32'	\$495
12' x 34'	\$525
Custom Size	\$1.58/SF

CUSTOM LOGOS MULTI-COLORED IMAGES

6 oz. Solid Silver/White Polyethylene with Sewn Hem

Standard Sizes

12' x 28'	\$315
12' x 30'	\$335
12' x 32'	\$345
12' x 34'	\$355
Custom Size	\$1.05/SF

	WHITE IMAGE	COLOR IMAGE
Up to 15 SF (ex. 3' x 5')	\$260	\$360
Up to 30 SF (ex. 5' x 6')	\$400	\$495
Up to 50 SF (ex. 5' x 10')	\$535	\$650

ALL PRICES SUBJECT TO CHANGE & AVAILABILITY PLUS SHIPPING



SHOT PUT THROWING SECTOR SURFACES

Shot Put Throwing Sector Surfaces make a firm, smooth surface with great drainage. Available in burgundy red, grey, or tan with either 20% red, grey, tan or white **Beam Clay® Binder** for a smoother surface, or 5% red, grey, tan or white **Beam Clay® Binder** for a somewhat “crunchier” surface, or “**STABILIZED**” in red, grey, tan, or white for a firmer, yet more resilient, surface – each with excellent drainage and resistance to erosion. Recommended depth is 3”-4” over a firm, well-draining base.

3/16” Shot Put Throwing Sector Surfacing with Natural Beam Clay® Binder

One cubic yard weighs approximately 2,700 lbs. in red, approximately 3,240 lbs. in grey, tan or white, plus add 20% for compaction. Each 1” compacted requires approximately 5 tons per 1,000 square feet in red or 6 tons per 1,000 square feet in grey, tan or white.

	BULK/TON	50 LB. BAG Up to 50/pallet
Burgundy Red with 5% Beam Clay® Red Binder	\$55	\$5.95
Burgundy Red with 20% Beam Clay® Red Binder	\$80	\$6.50
Grey with 5% Beam Clay® Grey Binder	\$55	\$5.95
Grey with 20% Beam Clay® Grey Binder	\$80	\$6.50
Tan with 5% Beam Clay® Tan Binder	\$70	\$6.95
Tan with 20% Beam Clay® Tan Binder	\$95	\$7.50
White with 5% Beam Clay® White Binder	\$55	\$5.95
White with 20% Beam Clay® White Binder	\$80	\$6.50

3/16” Shot Put Throwing Sector Surfacing with Stabilizer® Binder

For an even firmer yet more resilient surface with even less maintenance. One cubic yard weighs approximately 2,700 lbs. in red, approximately 3,240 lbs. in grey, tan or white plus add 20% for compaction. Each 1” compacted requires approximately 5 tons per 1,000 square feet in red or 6 tons per 1,000 square feet in grey, tan or white.

	BULK/TON	50 LB. BAG Up to 50/pallet
Burgundy Red with Stabilizer® Binder	\$110	\$7.50
Grey with Stabilizer® Binder	\$110	\$7.50
Tan with Stabilizer® Binder	\$125	\$7.95
White with Stabilizer® Binder	\$110	\$7.50

PALLET & COVER CHARGES: \$6.50/PALLET.

Also available:

Regional Shot Put Throwing Sector Surfacing from plants in the South, Mid-West, and West Coast – Stabilized or Non-Stabilized in a variety of colors.

ALL PRICES SUBJECT TO CHANGE & AVAILABILITY PLUS SHIPPING