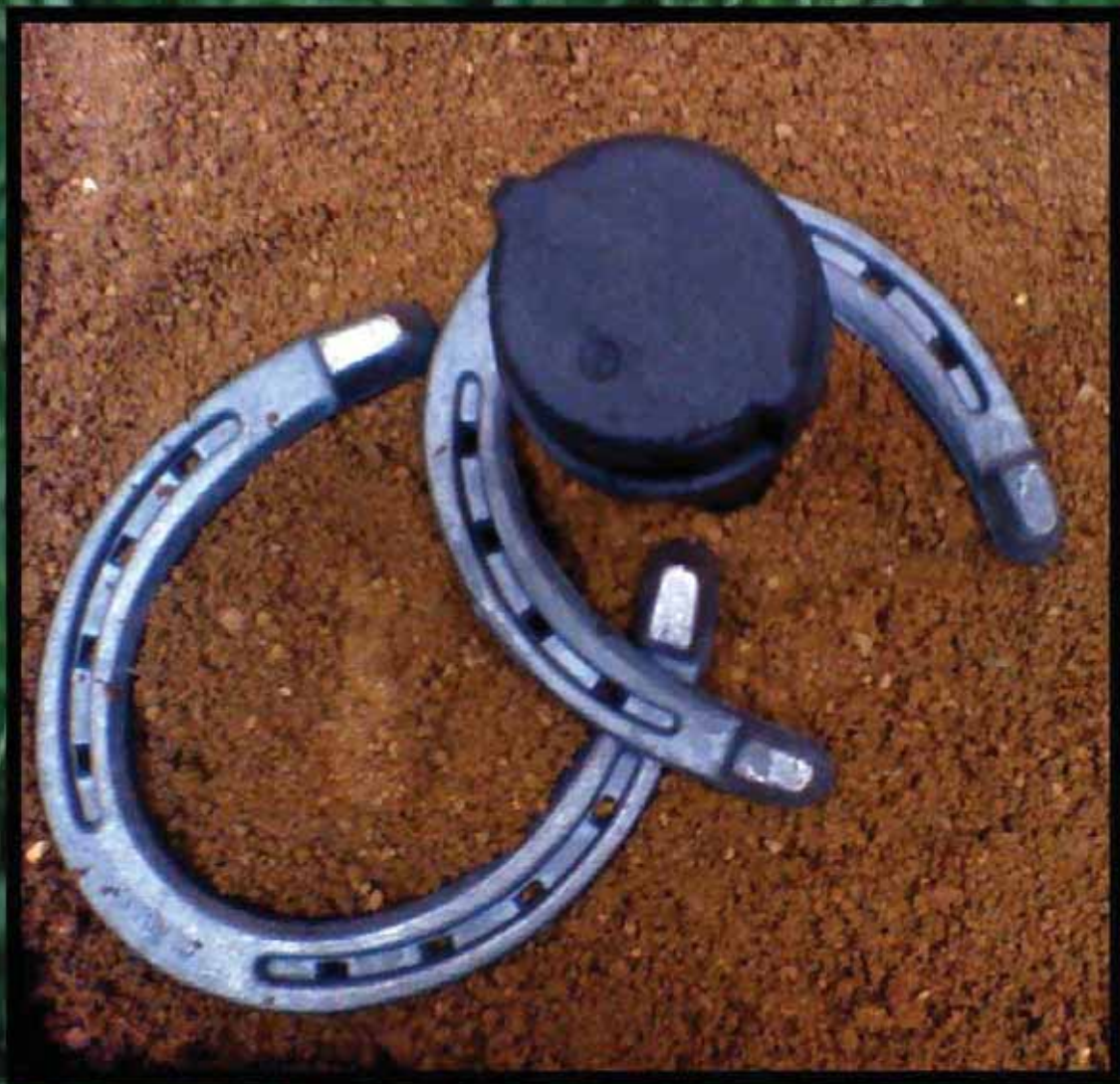


# HORSESHOE & QUOIT PIT CLAYS



# BEAM CLAY®

Horseshoe Pit & Quoit Pit Clay

**WHOLESALE PRICE LIST**  
 EFFECTIVE: JANUARY 1, 2018

## **BEAM CLAY® HORSESHOE PIT CLAY** - North Jersey Plant

50 lb. bags - up to 50/pallet.

Red - Extra Firm	
Orange - Extra Firm	
Brown - Extra Firm	
Orange/Brown - Medium Firm	
Grey - Medium Firm "Blue Gumbo"	
Tan - Medium Firm	
Orange - Firm Yet Soft ( <i>Easier to maintain, recommended for recreational &amp; residential use</i> )	

<b>BULK PER TON</b>	<b>50 LB. BAGS</b>
\$135	\$10.25
\$125	\$9.25
\$125	\$9.25
\$125	\$9.25
\$115	\$7.25
\$115	\$7.25
\$85	\$6.75

## **PRO MOUND® CLAY** Extra Firm, Moist & Chunky Dark Grey, 50 lb. bags - full pallets of 40 only from IL, MS, up to 40 bags/pallet from NJ.

Extra Firm "Blue Gumbo"	IL Plant
Extra Firm "Blue Gumbo"	MS Plant
Extra Firm "Blue Gumbo"	NJ Plant

\$325	\$11.75
—	\$14.25
—	\$17.75

## **DIAMOND PRO®** 50 lb. bags - full pallets of 40 only.

<b>CLAY</b> (Medium Firm, Reddish Brown)	Ft. Worth, TX Plant
<b>CLAY</b> (Extra Firm, Tan)	Ft. Worth, TX Plant
<b>RED</b> (Much looser, soft surface) ( <i>Easier to maintain, recommended for recreational &amp; residential use</i> )	Ft. Worth, TX Plant

—	\$10.15
—	\$10.45
—	\$8.95

## **SAF MAR MOUND™ CLAY** 50 lb. bags - full pallets of 40 only. TN Plant

<b>SAF MAR MOUND™ CLAY</b> (Medium Firm, Red)
<b>SAF 5 STAR™ CLAY</b> (Extra Firm, Brown/Red)

—	\$7.75
—	\$10.50

## **REGIONAL HORSESHOE PIT CLAYS**

### **WEST COAST**

<b>RED - Medium-Firm</b> , One Ton Bulk Bags	\$315	—
<b>RED - Firm yet soft</b> , One Ton Bulk Bags ( <i>Easier to maintain, recommended for recreational &amp; residential use</i> )	\$195	—

\$315	—
\$195	—

### **MIDWEST & SOUTH**

<b>RED - Extra Firm</b> , One Ton Bulk Bags	\$315	—
<b>RED - Medium Firm</b> , One Ton Bulk Bags	\$250	—
<b>RED - Firm yet soft</b> , One Ton Bulk Bags ( <i>Easier to maintain, recommended for recreational &amp; residential use</i> )	\$300	—

\$315	—
\$250	—
\$300	—

ALL PRICES SUBJECT TO CHANGE & AVAILABILITY

# BEAM CLAY®

Horseshoe & Quoit Pits

---

## **RECOMMENDATIONS FOR CONSTRUCTING BEAM CLAY® HORSESHOE PITCHING BOXES**

1. Make frame of 2 x 8's.
2. Place entire frame on 3-4" drainage bed of uniform sand, or 3/4" minus stone (with fines) covered with a 1/2" layer of uniform sand. Drainage bed should be larger than frame by at least one foot all around.  
**IMPORTANT** - Install drainage bed first with frame on top.
3. Apply 8" of **Beam Clay®** Horseshoe Pit Clay, 2" at a time, wetting and compacting each layer.
4. Two (6' x 6') boxes 8" deep require 2-1/2 tons (or 100 bags) of **Beam Clay®** Horseshoe Pit Clay.  
Two (3' x 4') boxes require 1,650 lbs. (or 33 bags).
5. For serious play, we recommend the **Red, Orange, Brown, or Grey** Extra Firm or Medium Firm grades. It is best to cover these when not in use — to keep excess moisture off from rain, yet keep moisture in when dry. When too hard & dry, these should be turned or dug up 4—6" deep and watered.

For most municipal and residential uses, we recommend the sandier **Soft Orange** grade, which does not need to be covered when not in use and is much easier to water if too dry.

## **RECOMMENDATIONS FOR RESURFACING EXISTING HORSESHOE PITS WITH BEAM CLAY®**

If resurfacing an existing Horseshoe Pit clay surface, scarify surface approximately 1/2" in depth and incorporate 1/2" of **Beam Clay®** Horseshoe Pit Clay into that surface to form a bonding layer of the two materials. Then apply 2" of **Beam Clay®** Horseshoe Pit Clay, wetting and compacting as above.

*ALL PRICES SUBJECT TO CHANGE & AVAILABILITY*



# BEAM CLAY®

Horseshoe & Quoit Pits

## HORSESHOE PITCH COURT LAYOUTS

### RECOMMENDED AREA

Ground space is 1400 square feet, including clear space.

### SIZE AND DIMENSION

Playing court is 10'x 50', plus a recommended 10' minimum unobstructed area on each end and a 5' minimum wide zone on each side.

### ORIENTATION

Recommended orientation is for the long axis to be north-south.

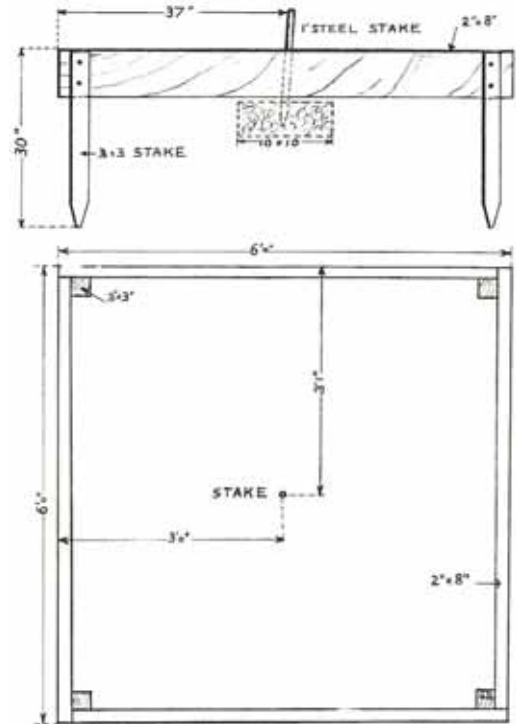
### SURFACE AND DRAINAGE

Surface of playing area, except for boxes and optional concrete walkways, should be turf. Area should be pitched to the side at a maximum slope of 2%. Elevation and slant of steel pegs should be between 2" and 3" and equal.

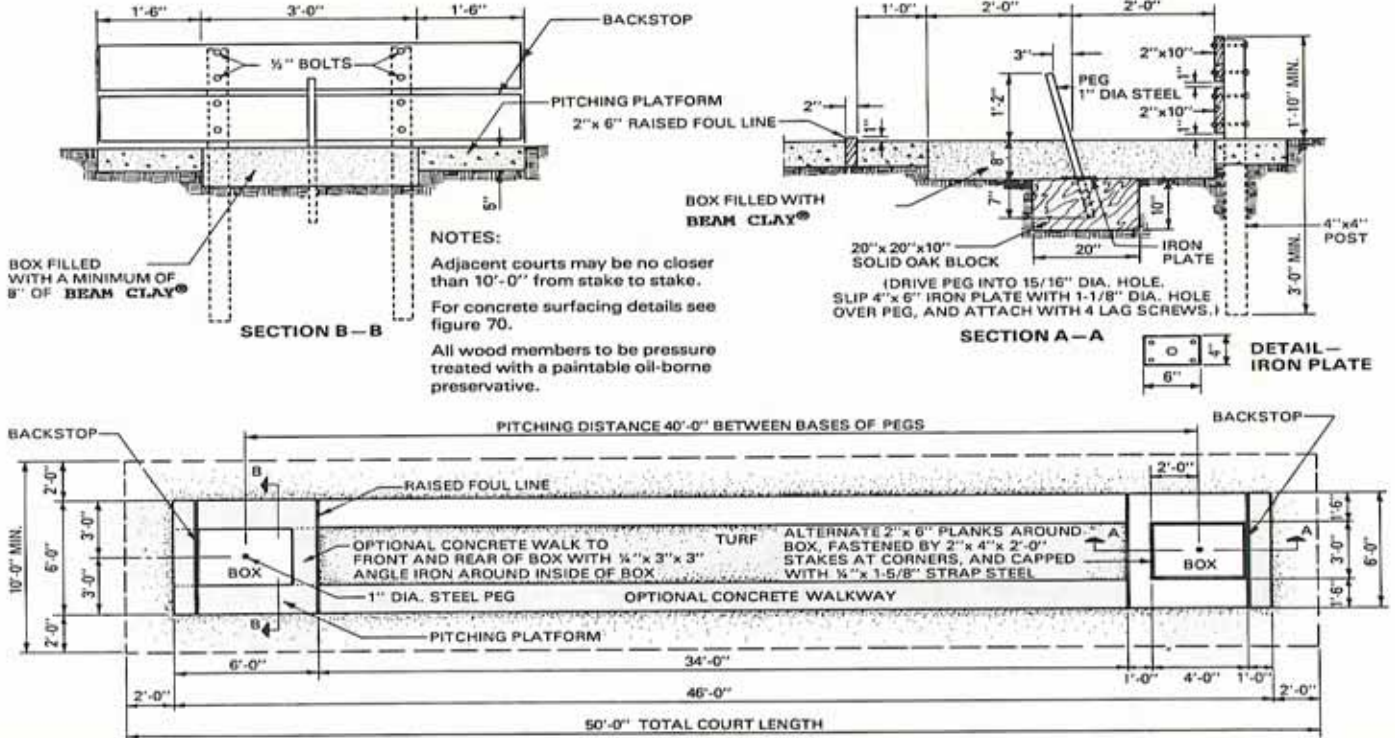
### SPECIAL CONSIDERATIONS

Boxes are to be filled with **Beam Clay® Horseshoe Pit Mix**.  
 SAFETY: A 2' high backstop should be constructed at the end of the box to intercept overthrown or bounding shoes.

### 6' x 6' HORSESHOE PITCHING BOXES



### 3' X 4' HORSESHOE PITCHING BOXES



ALL PRICES SUBJECT TO CHANGE & AVAILABILITY

# BEAM CLAY®

Horseshoe Pits & Quoit Pits

WHOLESALE PRICE LIST  
 EFFECTIVE: JANUARY 1, 2018

## RUBBER CURBING

PER PIECE

4" High x 3" Wide x 6' Long (23 lbs./piece, up to 100 pieces/pallet)

\$30

6" High x 4" Wide x 6' Long (45 lbs./piece, up to 63 pieces/pallet)

\$55

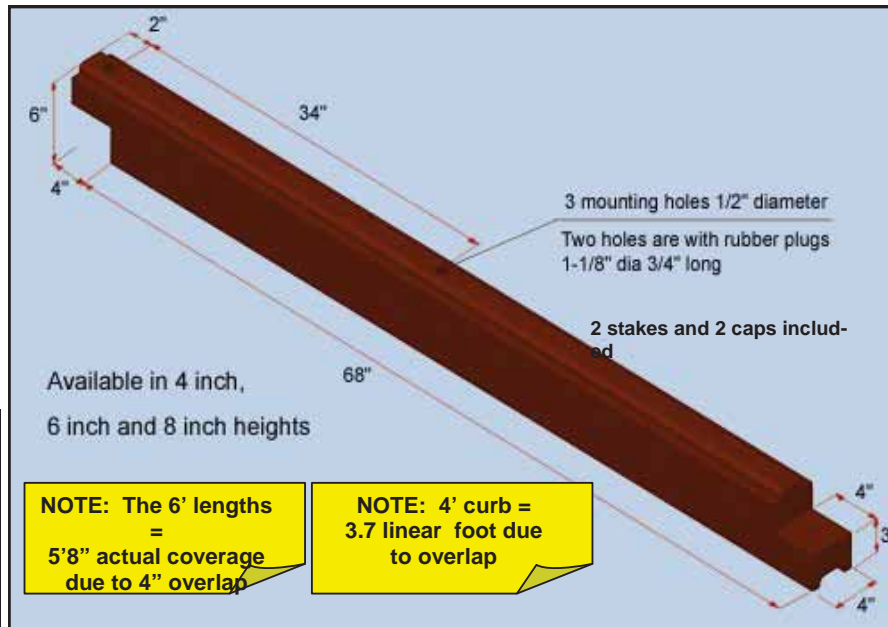
8" High x 4" Wide x 6' Long (70 lbs./piece, up to 45 pieces/pallet)

\$72

4" High x 3" Wide x 4' Long (14 lbs./piece, up to 140 pieces/pallet)

\$20

Please note: The 6' lengths are grooved and can be stacked to create desired height,. However, while the 4" H x 3" W is stackable, it is not stackable on 6"H x 4" W or 8"H x 4" W only stackable on its own 4"H x 3" W. The 4' lengths of curbing are not compatible with our 6 foot long curbs and are not grooved for stacking.



4' curbing



6' curbing

NOTE: The 6' lengths = 5'8" actual coverage due to 4" overlap

NOTE: 4' curb = 3.7 linear foot due to overlap

- More resilient than wood
- No warping or discoloring
- No splinters
- Non toxic
- Will not rot
- Stackable
- Interlocking
- Available in 4 ft lengths and 4" or 6 ft lengths and 4", 6" and 8" heights
- No CCA or other harmful chemicals
- Easy to install with pre drilled holes
- Made from 100% recycled tires
- Flexible with rounded edges
- Will not breed ticks, termites or other insects
- Maintenance free
- Hardware & Caps included
- Neutral brown tone-compatible with any surface color

2 stakes and 2 caps are included with each curb



natural brown bendable stackable interlocking hardware included

ALL PRICES SUBJECT TO CHANGE & AVAILABILITY

**BEAM CLAY®**

Horseshoe Pits & Quoit Pits

## HORSESHOE PIT EDGING

### Product Specifications

#### Product Description:

1. Material: compression molded composite of the 100% recycled rubber and polyurethane prepolymer
2. Physical properties of the rubber composite:
  - a) Density 0.6 oz/cu in (ASTM C642)
  - b) Durometer Hardness 65A ± 7 (ASTM D2240)
  - c) Tensile Strength\* minimum 125 psi (ASTM D412)  
(\* main structural areas)
  - d) Compression deformation 10% at 70psi, 68°F (ASTM D575)
  - e) Brittleness at Low temperature: -40°F (ASTM D746)
  - f) Freeze and thaw when exposed (ASTM C672)  
to deicing chemicals no loss after 50 cycles
  - g) Coefficient of thermal expansion:  $8 \times 10^{-5}$  in/in/°F (ASTM C531)
  - h) Weathering 70 hours at 158°F (ASTM D573)
    - hardness retained 100% (± 5%)
    - compressive strength 100% (± 5%)
    - tensile strength 100% (± 5%)
    - elongation retained 100% (± 5%)
3. Available models:
  - a) 3"W x 4"H x 72"L with weight of 23 lbs.
  - b) 4"W x 6"H x 72"L with weight of 45 lbs.
  - c) 4"W x 8"H x 72"L with weight of 70 lbs.
  - c) 3"W x 4"H x 48"L with weight of 14 lbs.
4. Finishing color: dark brown

#### Installation methods:

- a) with 2 spikes 18" long x 3/8" diameter provided for each 4" high piece
- b) with 2 spikes 24" long x 3/8" diameter provided for each 6" high or 8" high piece

Note: The mounting holes can be closed after installation with the rubber plugs 1-1/8 diameter and 3/4" long, supplied with the product.

#### Components:

- a) 100% recycled rubber from car and truck tires (NR, SBR)
- b) polyurethane prepolymer for rubber granules
- c) brown pigment

*ALL PRICES SUBJECT TO CHANGE & AVAILABILITY*